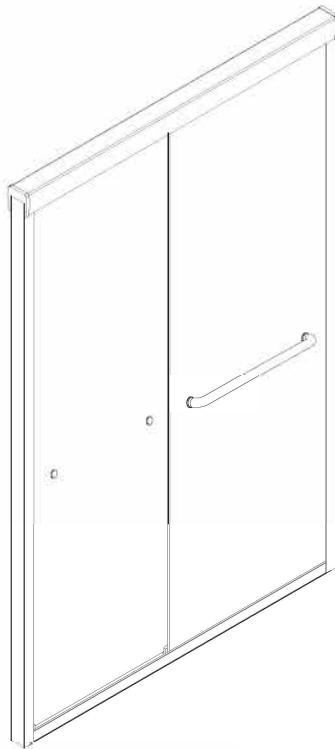
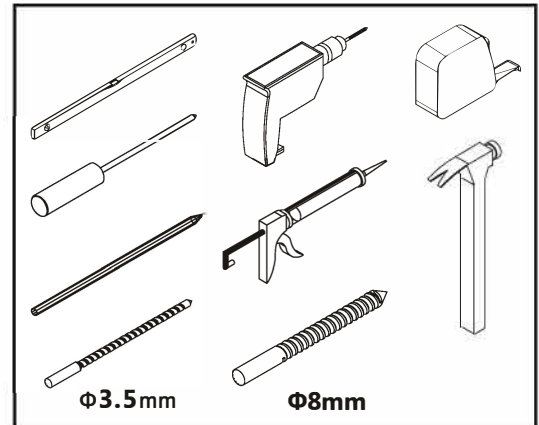


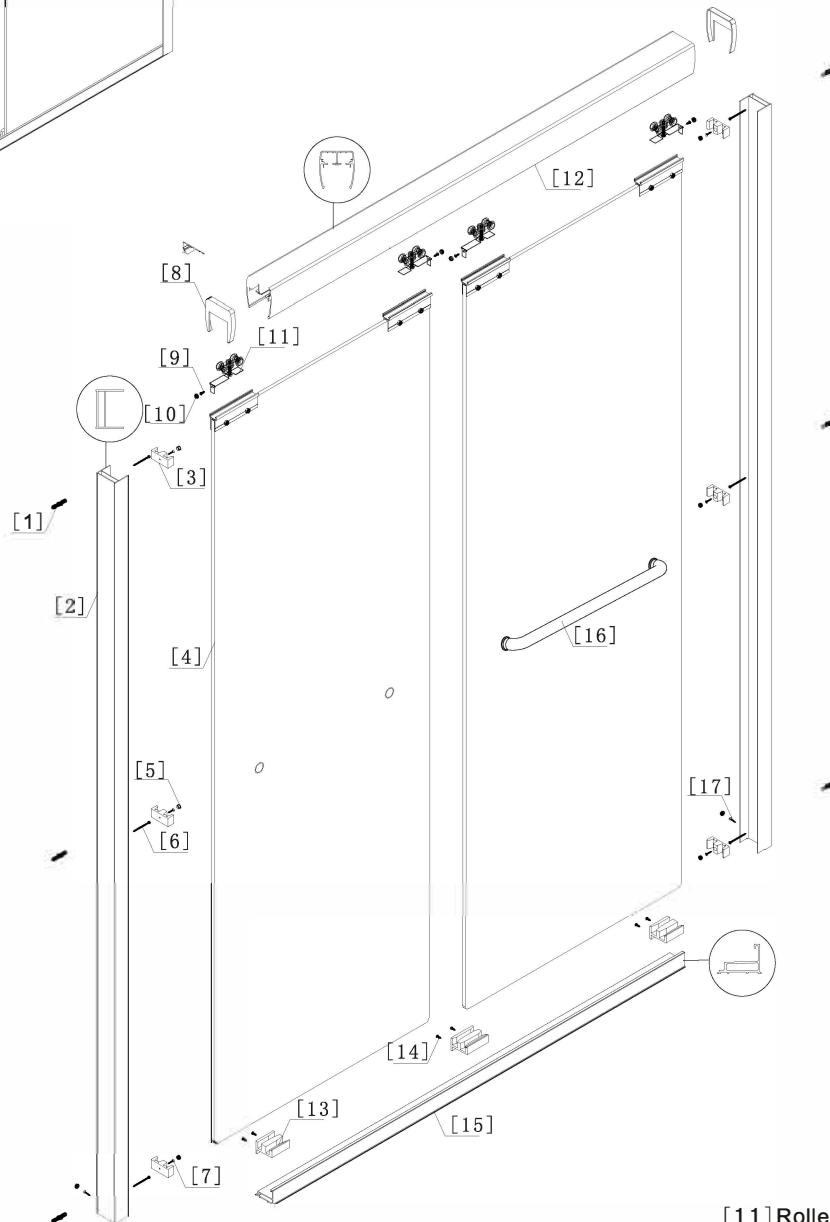
Alyssium 48751OCP Installation Instructions



BY-PASS GLASS DOOR



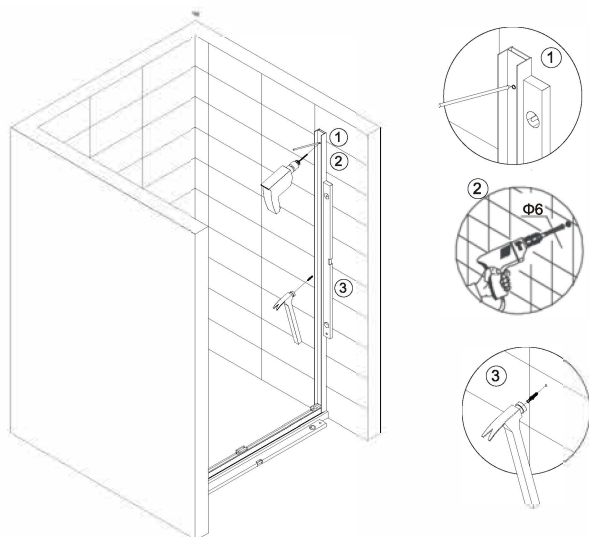
Tools Needed



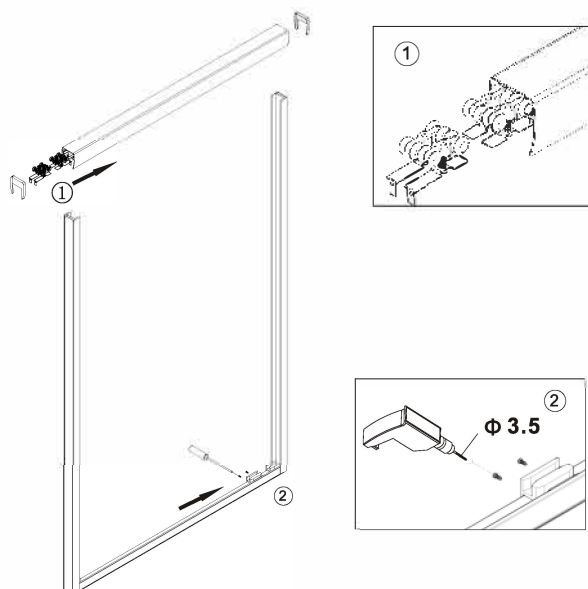
- [1] Wall plugs X 6
- [2] Wall profiles X2
- [3] Blocks X6
- [4] Door Panels X2
- [5] Covers

- [6] M4X45 Self tapping screws X6
- [7] M4X16 Self tapping screws X6
- [8] End Caps
- [9] M4X10 Self tapping screws X4
- [10] White round cap

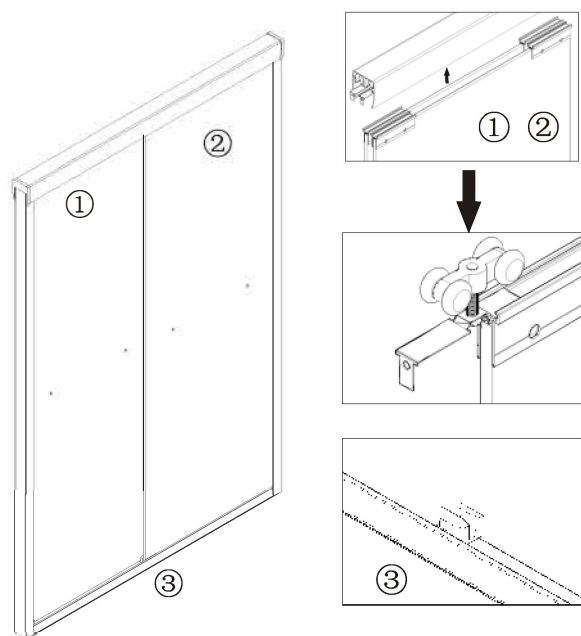
- [11] Rollers X4
- [12] Header X1
- [13] Stopper X1 Set
- [14] M4X14 Self tapping screws X6
- [15] Bottom Rail X1
- [16] Handle X2
- [17] M4X16 Self tapping screws X2



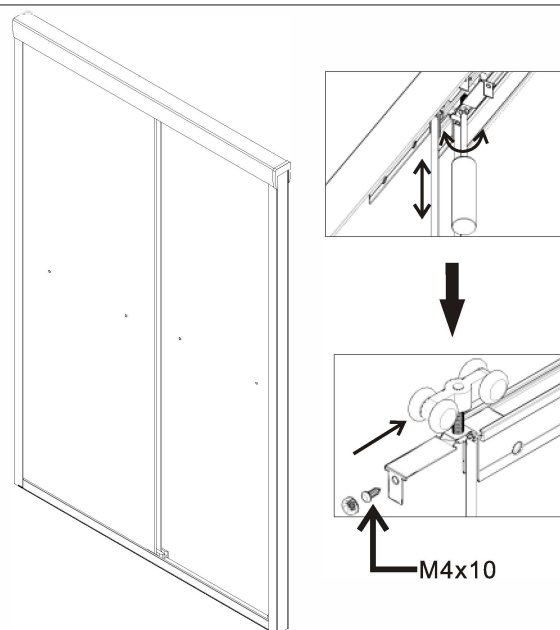
1.Ensure pan is correctly leveled. Measure & mark wall profile (10mm away from tray edge). Put bottom rail on the tray drill, plug & affix wall profiles.



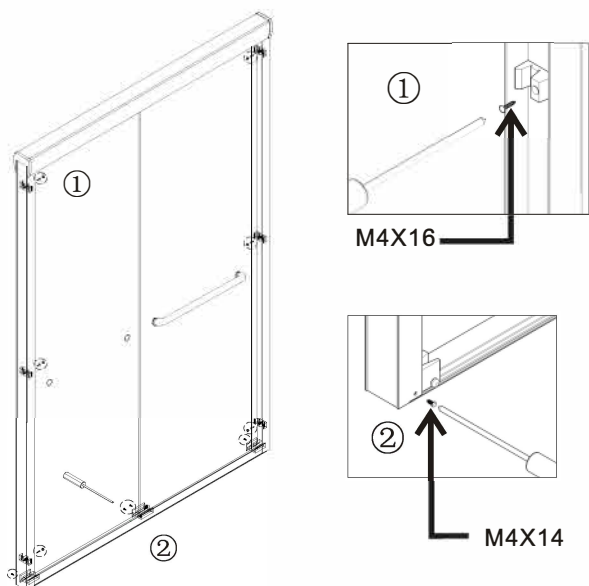
2.Insert the rollers into header as attached. Removing the central stopper to the side.



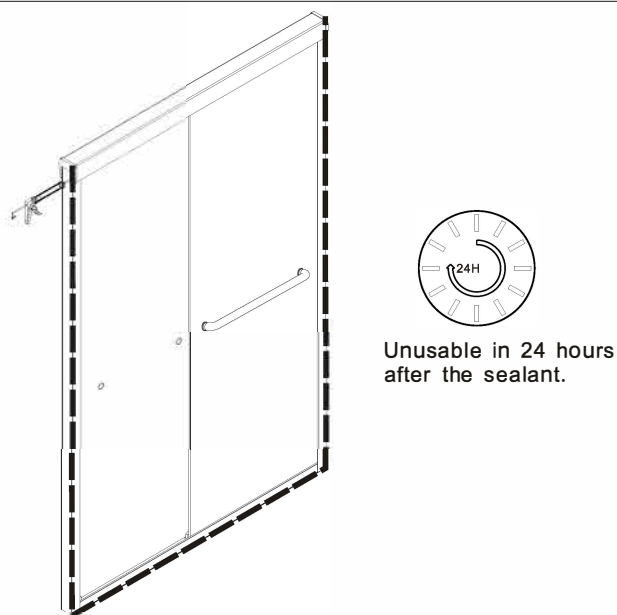
3.Assemble the two door panel and insert the rollers as above Fig. Then put the stopper back.



4.Adjust the height of door to be balance to slide smoothly by the way of adjusting screws on the roller. Then tighten the screws and stainless joint.



5.Tighten the blocks to wall profiles and push on caps as Fig 1. Tighten the three stopper and push on caps as Fig 2.



6.Use of good quality silicone sealant & cleaning of all joint areas is recommended.