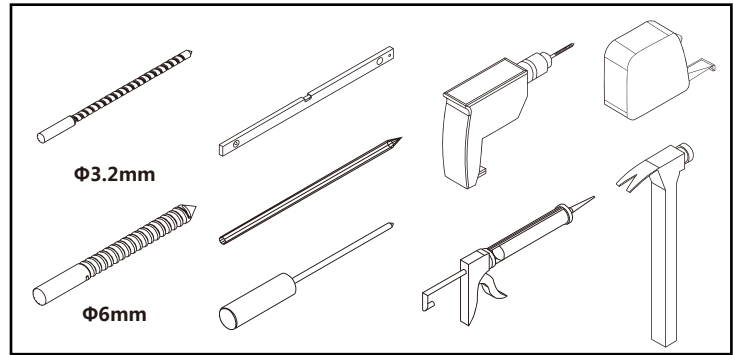
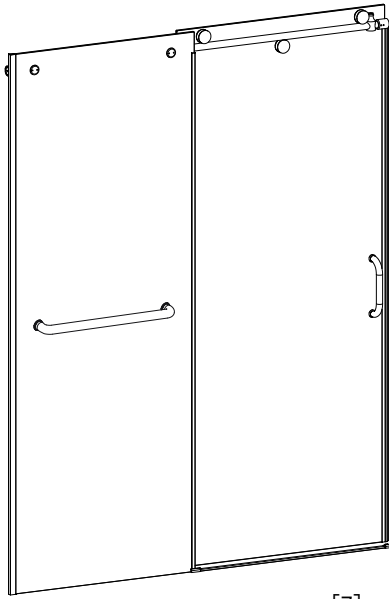
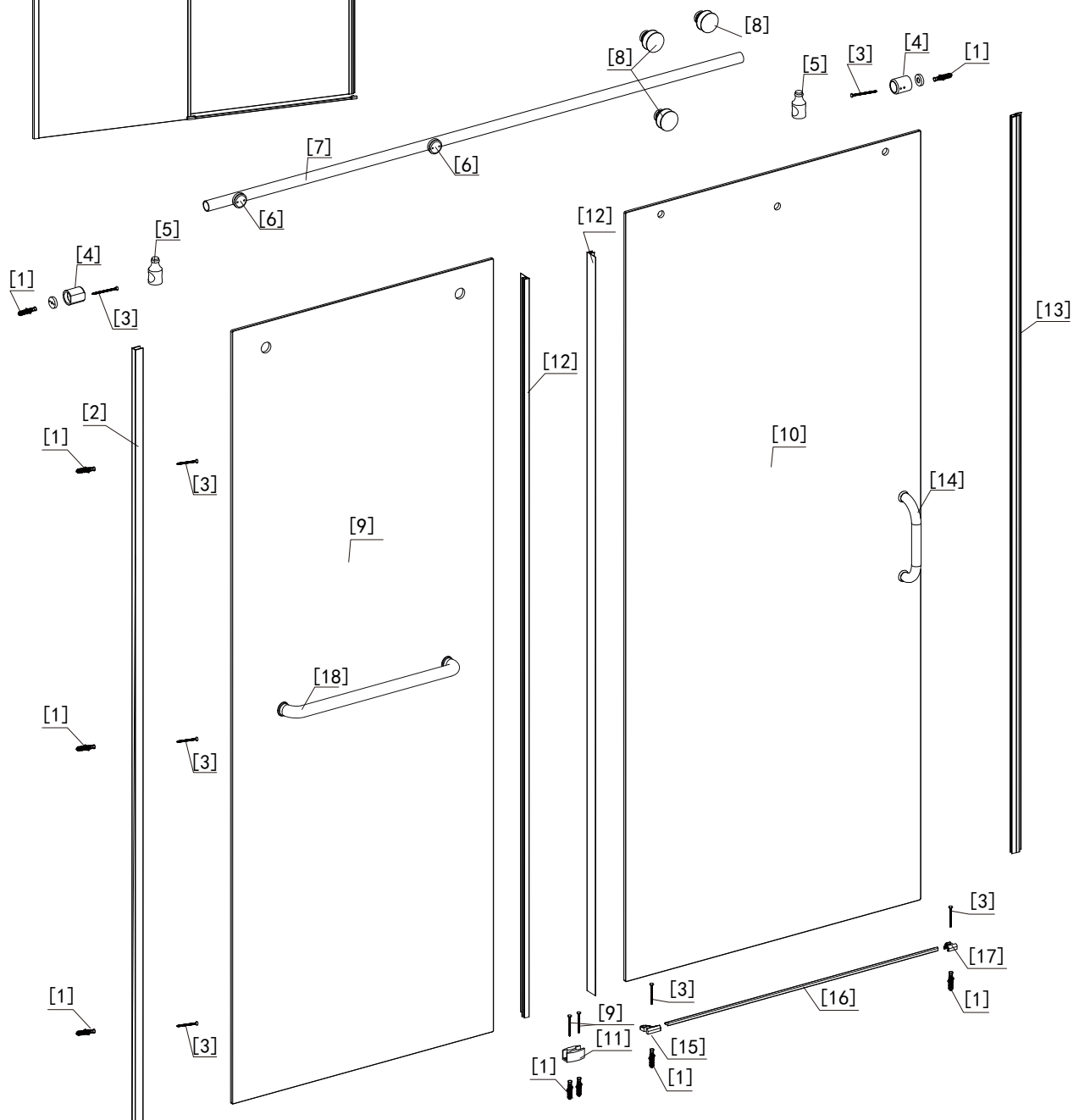


Aster HX420B Installation Instructions



Tools Needed

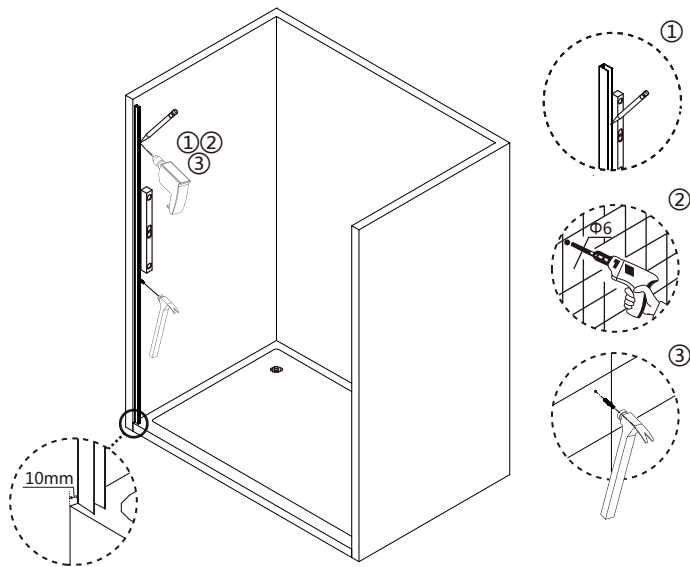


[1] Wall Plug x9
[2] Vertical Wall Profile x1
[3] ST 4X30 Screw x9
[4] Wall Kit x2
[5] Guide Stopper x2

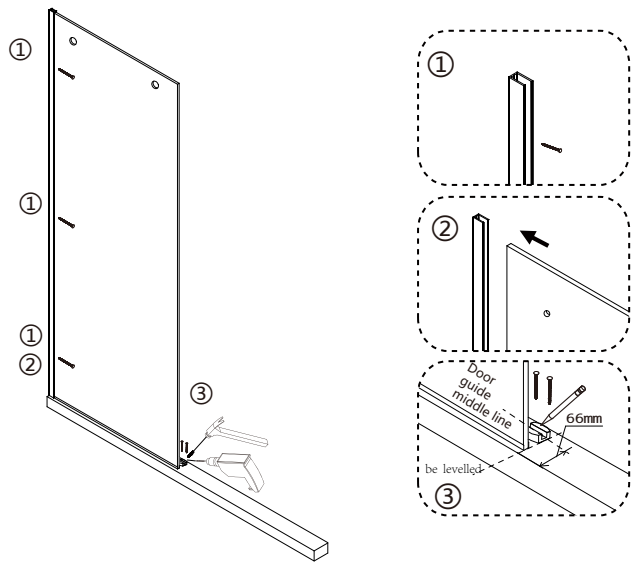
[6] Bolt x2
[7] Door Guide x1
[8] Roller x3
[9] Fixed Glass x1
[10] Door Glass x1

[11] Central Guide x1
[12] F Seal x2
[13] P Seal x1
[14] Handle x1
[15] Glass Clip x1

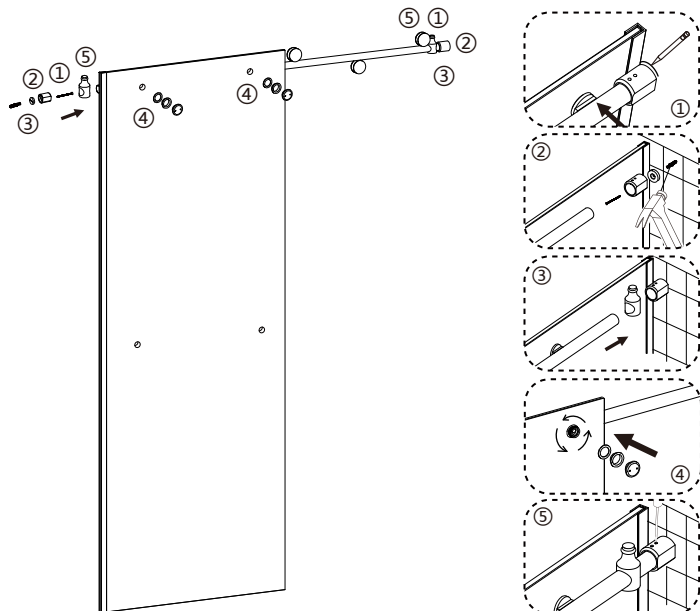
[16] Waterproof Bar x1
[17] Cushion x1
[18] Towel bar x1



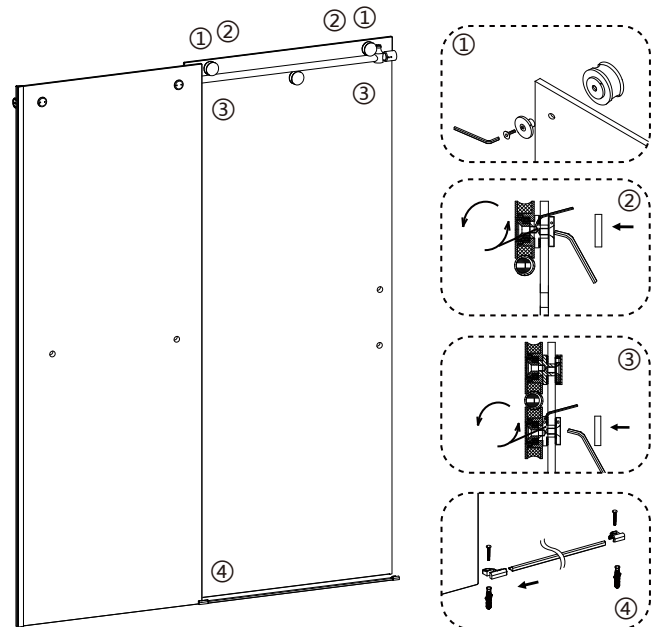
1.Ensure pan is correctly leveled. Measure & mark the position of wall profile.(10mm away from pan edge). Drill, and insert wall plugs.



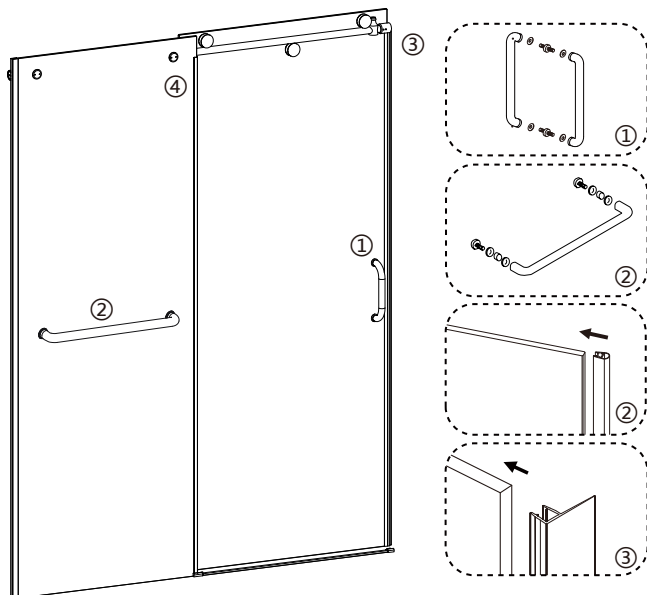
2.①Assemble the wall profile onto the wall and tighten with ST4X30 screws.②Put the fixed glass into U channel.③Insert the fixed glass into wall profile. Measure and mark the position of door guide, and tighten with ST4X30 Screws.



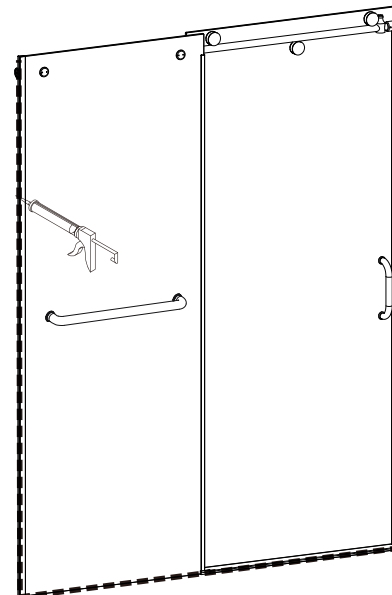
3.①②③Measure, mark and drill the position of wall kits, assemble the wall kits with ST4X30 screws. Insert the guide stopper into the two edge of door guide.④Tighten the fixed glass into door guide.⑤ Tighten the door guides and wall kits with jackscrew.



4.Assemble the rollers into door glass. Assemble the door glass onto door guide. Adjust the eccentric gear in the roller until the door glass travels smoothly. Assemble the bolts, adjust the roller. Assemble the glass clip, waterproof bar and cushion.



5.Assemble the handle. Put on all the P seal and F seals.



unusable in 24 hours
after the sealant

6.Use high quality 100% silicone sealant & clean all joint areas with denatured alcohol.