

Low Profile (LP34x60) Solid Surface Trench Drain

FEATURES

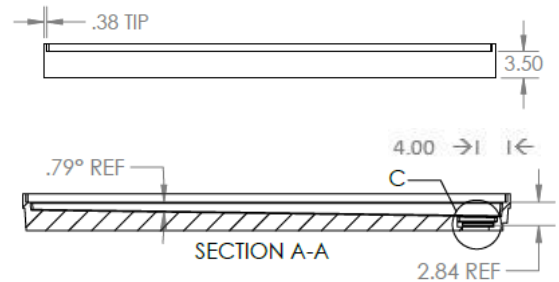
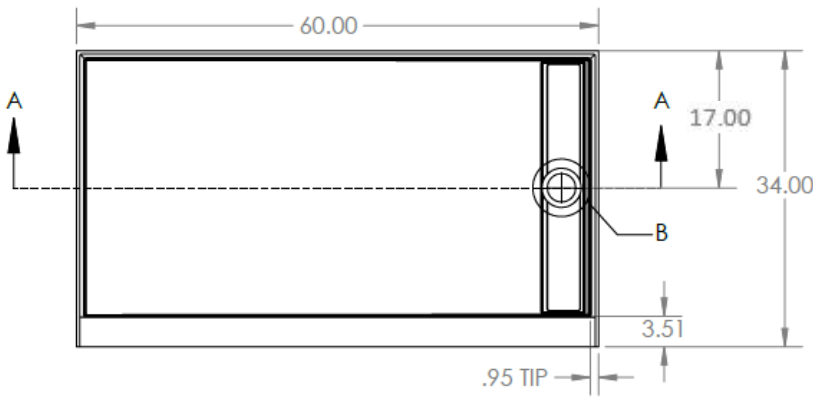
- Molded, one-piece solid surface material
- Non-porous through-body color (no gel coat or topcoat finish)
- Integral, watertight 1" high flange where pan meets wall
- Integral 3-7/16" high x 3-1/2" wide curb to receive shower door
- Textured, non-slip floor finish, sloped to trench drain

COMPOSITION


- Low Profile Solid Surface Pans are made from a minimum of 60% natural stone material, premium-grade NPG Isophthalic (ISO) solid surface resin.

Stainless Steel Cover

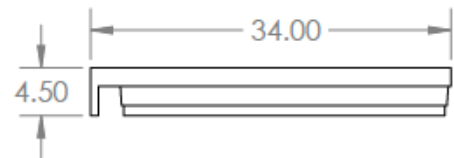
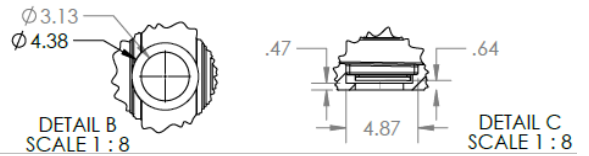
Features a stainless steel trench drain cover.



COLOR OPTIONS:

<input type="checkbox"/>	White	
<input type="checkbox"/>		
<input type="checkbox"/>		
<input type="checkbox"/>		

White



Meets or Exceeds the Following Specifications

- ASME A112.18.1 / CSA B125.125.1-11
- cUPC®

