

72" X 34" Trench Drain Shower Pan

MODEL #TR-OSL-72X34 (PICTURED BELOW)

MODEL #TR-OSR-72X34

Specifications:

- *Size: 72" X 34" (Variance +/- 1/8")
- *Drain Location: Right Offset
- *Flange: Integral Flange
- *Weight: 241.00 lbs

Standard Features:

- *Solid one piece construction
- *Abrasion resistant gel coat surface
- *Extremely sanitary
- *Will not mold or mildew
- *Textured non slip finish
- *Pre-leveled- rest on sub floor
- *10 year limited warranty against manufacturing defects
- *Seamless
- * Made in the U.S.A.

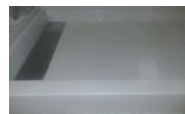
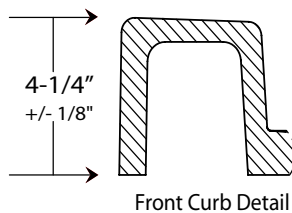
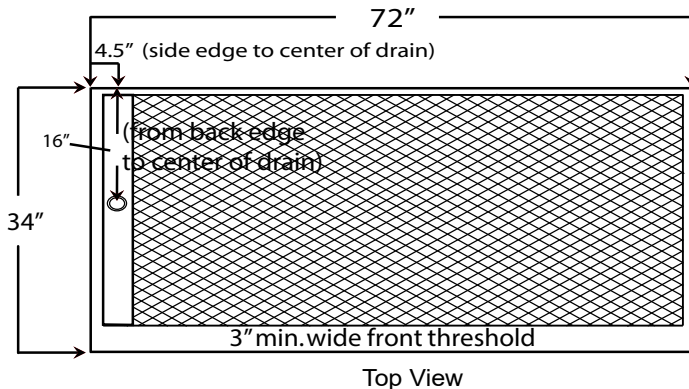
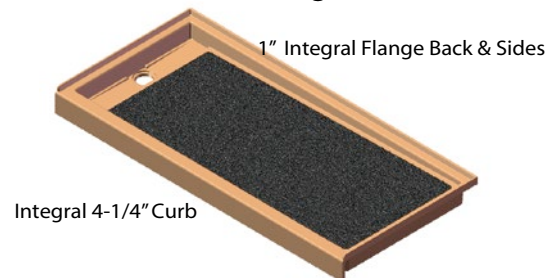


Standards and Ratings:

- *8ANSI Z124.1.2- 2005 tested
- *ASTM F-462 coefficient of friction test

Options:

- *Left or right drain location



* Includes stainless steel drain cover
Options available

