

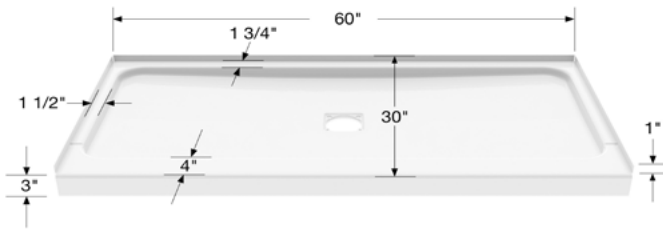
BrookCast 60" x 30" x 3" Porcelain Enamel Alcove Shower Base – Center Square Drain

Americast
by **MPL**



Specifications

- **Model:** RS-BZ-MPL-2022-00CHA
- **Drain Location:** Center



All dimensions are approximate. Structure measurements must be verified against the unit to ensure proper fit. Please see the detailed technical drawing for additional measurements.

Standard Features:

- Brilliant porcelain finish
- Durable steel strength
- Self-leveling support pad
- Lifetime limited warranty

Product characteristics:

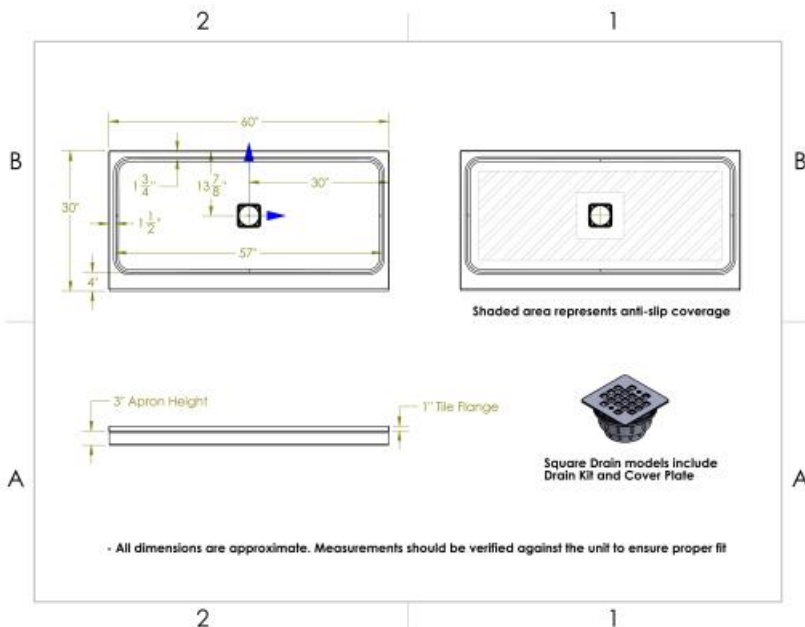
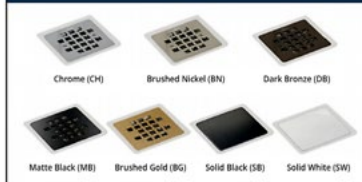
- Brilliant porcelain finish
- Durable steel construction
- Lifetime Warranty

Code Compliant:

CSA

SQUARE DRAIN WITH DRAIN AND CHOICE OF COVER-PLATE

- Square Grid Drain in five (5) finish colors.
- Square Solid Cover in two (2) finish colors.



Dimensions

60 x 30 x 3 In.
(1524 x 762 x 76 mm)

Standard Colors:



Weight

45 lbs - 20 kg

Shape

Rectangular

Drain location:

Center