



# PASADENA

GLASS SHOWER ENCLOSURE BY-PASS DOOR

## SLIDING ROLLER LAYOUT

### ELEVATION

Option 1 - Right Sliding

Option 2 - Left Sliding

Available in 3/8" (10mm)

1/2" (12mm) glass is not recommended

### SERIES

Pasadena

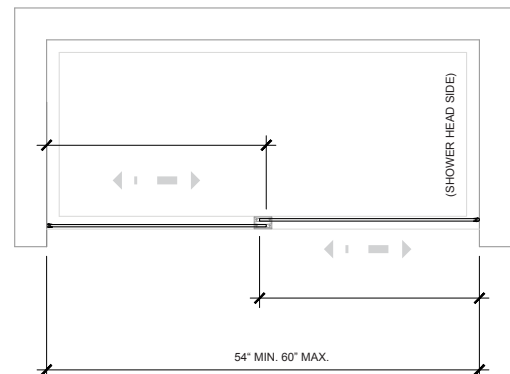
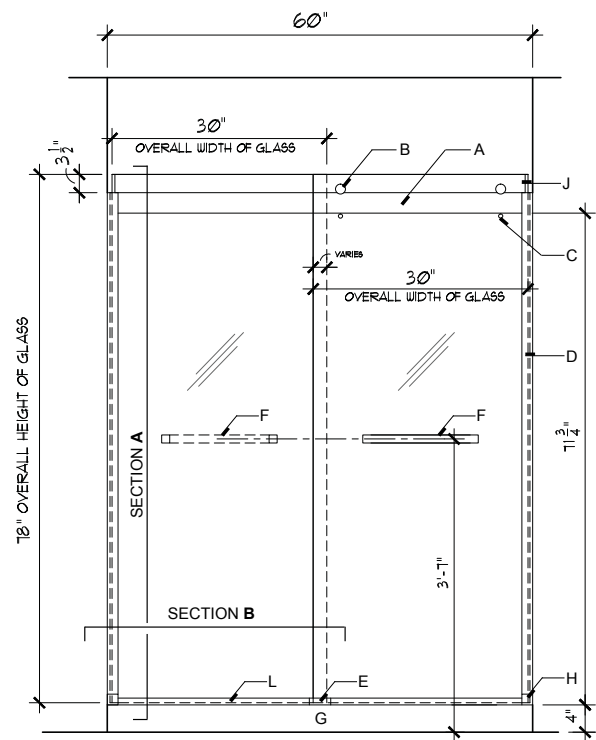
## KEYNOTES

- A. Top track
- B. Trolley hardware
- C. Anti-jump hardware
- D. Side rail
- E. Concealed panel guide
- F. Towel bar hardware
- G. Shower curb
- H. Side rail shoe
- J. Glass door edge protector
- K. 3/8" thick sliding glass door
- L. Bottom rail

## NOTES

- 54" min. to 60" max finished opening
- Glass available in 3/8" (10mm) tempered. 1/2" (12mm) glass is not recommended
- Panel overlap varies
- Hydrophobic coating is available upon request at an additional charge

## ELEVATION



MPL Company

O. 317-835-9000

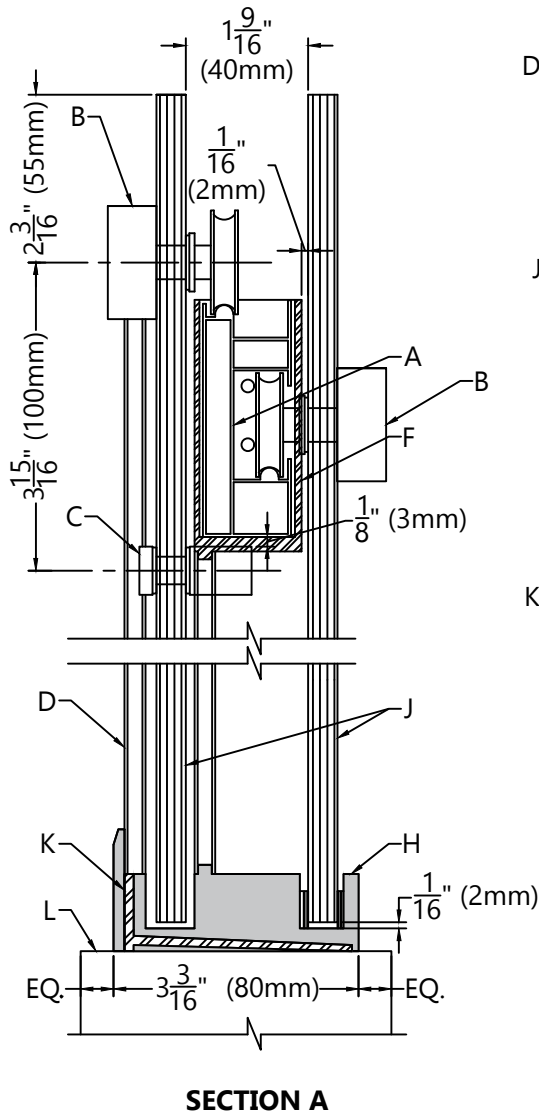
E. [CustomerService@MPLCompany.net](mailto:CustomerService@MPLCompany.net)

203 N. Edgerton Street  
Fairland, IN 46126

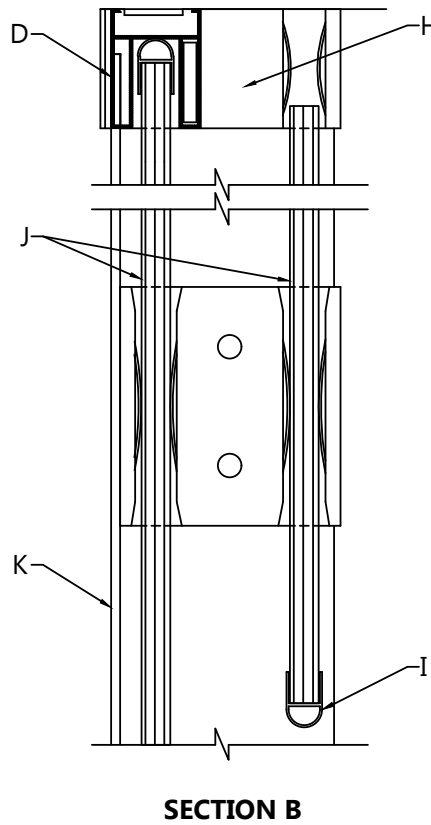
[www.mplcompany.net](http://www.mplcompany.net)

# PASADENA SERIES

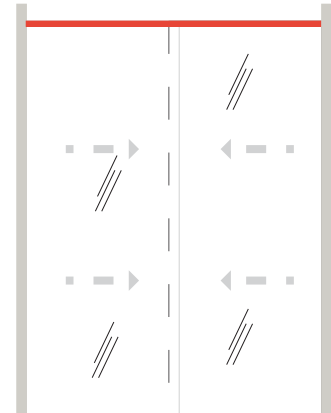
## SECTION A



## SECTION B



## SPECIFICATIONS



- Max height is 78" OA (top of glass to curb)
- Panels overlap (overall width/2) + 1" to get overall panel width
- Low iron is available upon request
- Hydrophobic coating available upon request  
*(This makes cleaning the glass easier)*

**NOTE:** Depending on application, all shower enclosures will come with adjustable trolley

## TROLLEY HARDWARE



Top Rail



Door Handle



Roller

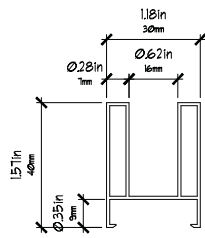


Bottom Rail

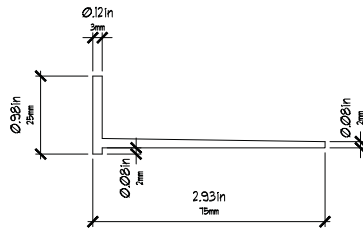
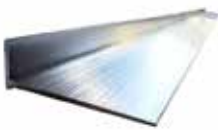
# PASADENA SERIES

## TROLLEY HARDWARE

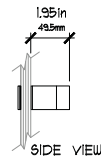
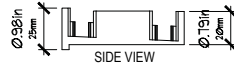
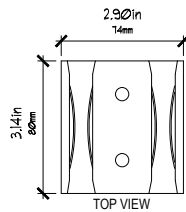
SIDE RAIL



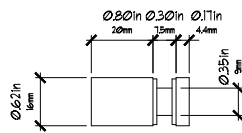
BOTTOM RAIL



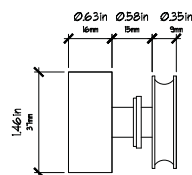
PANEL GUIDE



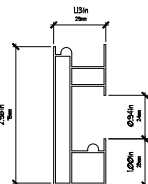
ANTI-JUMP



TROLLEY



TOP RAIL



## HARDWARE PULL

ACPA6316 16" Towel Bar

